

QUARTERLY

INSIDE

Board & Singles Seeking Mates. . .	2
Convention Displays & eBay	3
Red, Amberina, Ruby Stretch . . .	4-6
Green Candleholder Promotion .	6-7
On-line Questions & Answers. . . .	7
Recent Auction Review	8
Stretch Glass from SGS Closet . . .	9

President's Message: **HAPPY HOLIDAYS** NOV 2013

The holiday season is upon us, and with it comes many opportunities for us to use and give our colorful iridescent stretch glass. I hope you will join me in doing both this year. To help you with the "giving" of stretch glass, the Stretch Glass Society is offering two Emerald Green Melon Rib candleholders with the renewal of your 2014 membership for the special price of \$44.95. If you purchased these candleholders when they were the 2002 convention souvenir, this offer gives you the opportunity to get two more to give as gifts, in addition to your 2014 membership renewal.

We are offering a similar "package" on eBay in an effort to gain new members, while promoting stretch glass as an art form and collectible. Further information on this campaign is included later in this edition of the *SGS Quarterly* and is available on stretchglassociety.org and Facebook.

Setting our tables with Ruby and Green stretch glass, accented with your other favorite colors, is a great way to create a festive holiday look. I've been doing this for my annual Holiday Open House for many years, and always receive compliments and questions about my glass. Most guests marvel at its magnificent colors and shapes, and comment on how it complements the holiday goodies they are enjoying. As you are having fun using your stretch glass this holiday season, please think about recreating your holiday display at our 40th Anniversary convention. The theme for member displays is "Celebrating with Stretch Glass." And please take a few photos to share with us on Facebook or in the *SGS Quarterly*.

Your Board of Directors has been very busy since we departed Marietta in July. We are actively promoting the SGS and stretch glass and keeping you, our members, informed of opportunities to learn about and acquire stretch glass. Kathy Eichholz and Mike Getchius have been busy posting photos and information about the SGS and stretch glass on Facebook and stretchglassociety.org to enhance our on-line, social media presence. Tim Cantrell has been overseeing the sale and shipping of our red stretch glass punch cups. I hope you got one or two of these limited edition punch cups to go with your red stretch glass punch bowl. Stephanie Bennett and Anne Blackmore are keeping you and our friends at NFGS informed of our *Stretch Out* calls and upcoming auctions which include stretch glass. As you are reading this, everyone is working on our Holiday Promotion of Emerald Green Melon Rib candleholders. A BIG thank you to Sarah Plummer for coaching us with regards to on-line marketing and selling!

(continued on page 2)



STRETCH GLASS SOCIETY BOARD OF DIRECTORS

OFFICERS:

PRESIDENT: Cal Hackeman

SECRETARY & Newsletter Editor: Stephanie Bennett

VICE-PRESIDENT: Tim Cantrell

TREASURER: Jim Steinbach

DIRECTORS:

Anne Blackmore

Roger Christensen

Kathy Eichholz

Mike Getchius

Sarah Plummer

President's Message, continued

Non-board members Joanne Rodgers and Michael Krupar are helping to plan our 40th Anniversary Convention, Show & Sale (July 23-25, 2014). Our next project will be planning a membership outreach campaign for the spring of 2014. Would you like to assist with some of our initiatives? We welcome your involvement – please give me a call or send me an email and we will get you involved in whatever activity is of interest to you.

By the time I am writing to you next, it will be 2014! Time flies when we are having fun, doesn't it? I wish each and every one of you a Happy and Safe holiday season and look forward to you joining us for our next *Stretch Out* call on February 20, 2014.

Cal

Cal Hackeman, President



Singles Seeking Mates



Do you have a lonely piece of stretch glass that was once part of a set? Find its partner, make a marriage, and increase the value of both pieces!



1. I knew this under-plate didn't belong with the common Diamond bowl it was sitting on when I bought it. Using the measurements in *American Iridescent Stretch Glass (AISG)*, I discovered that it belongs under the relish jar made by U.S. Glass. (*AISG* plate #709 shows the set in pink.) My under-plate is blue. I'd be happy to sell it to the owner of a lonely blue jar. Stephanie Bennett [REDACTED]



2. I love my recently purchased Fenton 11 3/4" octagonal Persian Pearl Laurel Leaf plate! But I would love it more paired up with the #750 octagonal bowl that goes with it. (The set is pictured in *AISG* plate #133 – in Celeste Blue, without the Laurel Leaf design.) Please let me know if you would consider selling your Persian Pearl bowl. It must be Laurel Leaf to be happy with my plate. Millie Coty, [REDACTED]

3. We are seeking the lid to a Fenton, #743 Puff Jar in Topaz. (See picture of Topaz jar here and *AISG* plate #307 in Florentine Green for measurements.) We're also willing to sell the base to someone who has their heart set on matching it up with their lid. Renée & Dave Shetlar, [REDACTED]



Member Displays for our 2014 – 40th Anniversary Convention

by Joanne Rodgers

I know, you are planning Thanksgiving dinner, Christmas entertaining and your New Years' Eve blast. The farthest thing from your mind is the July 2014 Stretch Glass Society Convention. But, hear me out; there is a connection.

The SGS has reached its 40th Anniversary, and our theme for the member displays is....CELEBRATION.

Will you use stretch glass when celebrating any of the above holidays? Have you brightened your table with stretch glass at Easter, for a wedding or baby shower; a birthday celebration; a 25/50th wedding anniversary; a graduation celebration?



Photo from Renée & Dave Shetlar

We would like every member attending the 2014 Convention to help us CELEBRATE by bringing a display using stretch glass in a table setting for a special occasion. As you entertain during the next 8 months, using your stretch glass, you have the makings of your member display. Now, wasn't that easy?

As we saw at the 2013 Convention, beautiful tables can be set using all stretch glass, or stretch glass coordinated with other glass and china. Pick your theme, follow your imagination, and CELEBRATE our 40th Anniversary by participating in the member displays. As soon as you determine the subject of your table setting, please share them with me so the Committee can plan for a sufficient number of 6' round tables. Contact me



SGS Club Displays for our 2014 – 40th Anniversary Convention

by Kathy Eichholz



2014 is The Stretch Glass Society's 40th Anniversary! As Ruby is the traditional gift for 40th celebrations, the club display's theme will be Red/Ruby stretch glass. We would love to have contributions of glass for our display from everyone in the club who plans to attend the convention.

Please email me at [redacted] with a description of your piece so we can avoid duplicates and get the widest variety of this wonderful stretch glass. So, search your collections and show us what you've got! Let's make this the best club display yet!

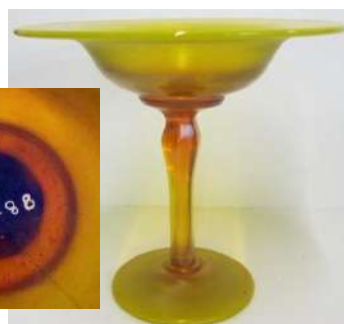


ON **ebay**

Recent items of note



Fenton Celeste Blue pitcher, 16 bids, \$203.50



Fenton Tangerine compote from Frank's Closet, 13 bids, \$127.50

Diamond Gold (marigold) Adams Rib candlesticks, 14 bids \$57.99



"ANTIQUE 20s DUGAN DIAMOND "ROYAL LUSTRE" RUBY RED CARNIVAL GLASS CANDLE STICKS"
Price: \$2,500.00 Buy it Now
Bring them for our club display!





STRETCH in Depth

Red, Amberina, Ruby Stretch Glass
by David Shetlar

During the October “Stretch Out” phone discussion on red stretch glass, I realized that I have never dedicated an entire technical article to this desirable glass! Early in the discussion, there were questions about amberina and how it compared to “true” ruby or red glass. Before I go any further, if you haven’t done so, look at the color page. What I would like you to see is that the top images appear really dark red, in some cases almost black! Lower on the page, you’ll probably detect that many of the pieces really appear to be brighter red, almost verging on orange in cast! From the records that we have, ALL of these pieces were likely called “ruby” by the companies making glass in the 1920s and 1930s! Why so much variation?

Selenium-based glass is in a category of what is called a striking glass. Selenium, cadmium, gold and copper colorants, as well as a few others, take on (i.e., strike) different colors when heated, cooled, and reheated again! The intensities of the colors can be mediated when the piece is being treated in an oxidizing, neutral or reducing flame. These all refer to the amount of air that is being supplied to the natural gas as it is being burned in the warming-in ovens (= glory holes). I did a quick search for striking glass and found a very good article written by Jerry Kudlac for the Air Capital Carnival Glass Club (Air Capital Newsletter – Jan/Feb/Mar – 2011). He was trying to solve the problem of finding “yellow” Fenton carnival glass that didn’t fluoresce yellow-green like true topaz or “vaseline” glass, but fluoresced with an orange color. He cited a study published in 1919 by two scientists working in the Pittsburgh Laboratory of the Bureau of Standards. These two scientists determined that production of selenium red glass required experienced glass makers, and they tried to quantify some of the variables. What is more interesting is that while glass makers generally talk about selenium as being in their ruby batches, cadmium sulfide is also needed in order to get a bright red! Cadmium imparts a yellow color to the glass and also glows orange under black light!

Kudlac also summarized the process of striking selenium/cadmium glass. When it comes out of the mold, it is a transparent yellow. It can be heated and molded immediately, but to be struck to the desired red color, the glass has to cool below the softening point before being placed back in the glory hole for reheating. This is where things can get interesting! If heated to the optimal

temperature of 1650 °F, the glass will strike a bright red. If below, it will strike orange, and if higher, it will become a deeper, and darker, red! If the glass was kept hot for longer than five minutes, it would become an almost opaque red and finally it turns a brown (the two scientists called it a “livery brown” color!). In short, each piece of selenium/cadmium glass underwent many variables that resulted in each piece being different! If the base or rim didn’t reach the 1650 °F temperature, that portion would be orange or even remain yellow! If some portion of the piece got too hot for too long, it would become dark red, almost opaque.

When we worked with Frank Fenton to make some ruby stretch club pieces, he always proudly stated that “Fenton Ruby should be red through and through!” Only their most experienced hot metal workers were used, and they were instructed to take the time to strike the pieces from the top to the bottom. This always seemed a bit strange to me until I saw his reaction to some of the Imperial amberina pieces. They obviously weren’t struck very well in his mind! Personally, the Fenton’s ruby can often be too dark! If you look at the #9 candy jar (Fig. 4), the #640 cupped bowl (Fig. 6) and sherbet (Fig. 15), you can miss that these are actually ruby if they are sitting on a dark surface and there is no back lighting! Without a bright light behind them, it is difficult to determine if the pieces are a dark wisteria or even black glass!

I have selected some of the more spectacular pieces of Fenton Ruby Stretch to illustrate this article. The really big pieces were made from the #604 bowl. This bowl can be found as a flared punch bowl with a matching stand (Fig. 1), a low bowl (Fig. 8), a wide-flared and cupped bowl (Fig. 9) and even an 18-inch diameter plate (Fig. 10). All of these pieces have been darkly struck, but most have a hint of lighter red, even amberina, in the bases. The three-footed #603 bowl is another large and desired form. It most commonly comes cupped in (Fig. 2) or crimped (Fig. 3). A couple pieces have also shown up with the rounded, saw-tooth edge (Fig. 5) which means that a different top retaining ring was used during the molding process. Note that the feet of these pieces range from dark red, to a hint of amberina, to mainly amberina, but the tops are generally struck dark. The large #602 vase (Fig. 19) is usually cupped or flared and most of these are really darkly struck. The similar #1542 vases (“flip vase” with stuck-up base, Fig 24) are usually thinner, have more transparent red color and come with various top treatments.

There are several “mystery” red Fenton pieces! These have a definite orange-red color and are usually pretty even in color. This color has shown up in a twin-dolphin, square comport (Fig. 7), a 6-inch tall #612 vase (Fig. 14), the one-pound #736 candy jar (not figured) and

(continued on page 6)



Fig. 1



Fig. 2



Fig. 3



Fig. 4



Fig. 5



Fig. 6



Fig. 7



Fig. 8



Fig. 9



Fig. 10



Fig. 11



Fig. 12



Fig. 13



Fig. 14



Fig. 15



Fig. 16



Fig. 17



Fig. 18



Fig. 19



Fig. 25



Fig. 21



Fig. 24



Fig. 23



Fig. 22

Fig. 20



Red, Amberina, Ruby Stretch Glass, continued from page 4

a melon-rib bowl (not figured). There has been some debate as to whether these are true ruby glass or darkly struck tangerine glass! Tangerine glass is also a striking glass and it starts from a yellow-based glass! However, when you compare all these pieces with true tangerine (the exact same pieces are well known in tangerine), the mystery pieces have definitely more red in the color. Personally, I think that these pieces were made from a single batch of ruby glass that may not have had the standard amount of selenium in it, which leads me into the Imperial ruby stretch!

Generally, Imperial's ruby stretch glass appears to be a lighter red and often has significant amberina overtones (see Fig. 25 for six examples of their vases). However, with this said, they also, occasionally, darkly struck their pieces. One of their 8.5-inch plates (Fig. 12), a couple of their wide panel bowls (Figs. 18 & 20), and a creamer and sugar set (Fig. 22) are very darkly struck and are becoming almost opaque! On the other end of the spectrum, look at the 8.5-inch plate (Fig. 11) and the narrow panel sherbet and underplate set (Fig. 21). These are not unique pieces! We found a set of five of the light-colored plates and virtually all the sherbets and underplates are this same orange-red color! Again, my personal belief is that these pieces were also made with a batch of ruby that was short on one of the colorants! The dark pieces were held to the fire a bit too long (if you watched the glass workers, they were often chatting and not paying careful attention!), and the amberina pieces that tend to be more yellow than red weren't struck long enough! On the other hand, I personally like the ruby to amberina Imperial pieces because there is little doubt as to what color they are when they sit on a table!

Finally, were Fenton and Imperial the only companies that made ruby stretch glass? We also know that Diamond made ruby glass and quite a few bowls and candleholders can be found in their Ruby Lustre format. All of these pieces are well-struck ruby glass, but they have shiny gold to silver iridescence! However, two 8-inch bowls have shown up (Fig. 16) which generally appear as amberina to ruby and they have true stretch effects inside and out. The problem is that the bases of these two bowls do not exactly match other Diamond bowls, and while similar to the Fenton #600 bowl, they don't exactly match those either! They do fit nicely on one of the Diamond black bases (as illustrated)! There is also an amberina/ruby covered bonbon in the Iridescent Stretch Glass book (plate 57) that is obviously Diamond! On the other hand the bowl figured in plate 17 has now been determined to be Fenton's #640!

In summary, ruby stretch glass (like tangerine and pink, which are also striking colors) can range from

mainly yellow-amberina-orange to nearly black-red. Apparently, this is mainly due to the time given to strike the piece and how uniformly the handler reheated the piece in the glory hole. With all these variables, it's amazing to find two or more pieces that are almost the same in color! On the other hand, this also leads to the charm of collecting these glass pieces, as the variation can be extreme and each collector has in his or her mind what they like! While we collectors describe these pieces as amberina, light ruby and dark ruby today, they were ALL "ruby" when they left the factory! LOL!



**Are you looking for the perfect holiday gift?
Beautiful Green Stretch Glass Candleholders
Now Available**

**Purchase 2 Fenton Stretch Glass Candleholders
for \$44.95, and we will include
a Stretch Glass Society Membership for you**

(This eBay promotion is attracting new members,
and is also available for member renewals.)

This holiday season the Stretch Glass Society (SGS) is tapping its inventory of iridescent stretch glass to make these wonderful stretch glass candleholders available to you. Get yours now to give to someone special (or keep for yourself). For a limited time you may purchase two Emerald Green stretch glass Melon Rib candleholders and we will include a one year membership in the Stretch Glass Society (a \$74 value) for only \$44.95. These beautiful stretch glass candleholders were originally made for the SGS in 2002. We recently discovered a limited supply and are offering them for sale through December 15, 2013, or while supplies last.



These Melon Rib candleholders are a perfect holiday gift for anyone who likes Fenton glass, candleholders, stretch glass or all things green. Or you may just keep them for yourself and use them on your holiday table as you entertain guests during the holiday season. These are handmade glass and as such there may be some variation between the two candleholders you will receive. The approximate dimensions of the candleholders are: 5"

diameter at the widest point, 2 1/4" tall from the base to the top of the flared sides, and the diameter of the base is 3 1/4". At \$44.95 this is a great deal for everyone with an appreciation for iridized glassware. When our inventory is exhausted, there will be no more since these were made only for the Stretch Glass Society by the Fenton Art Glass Company over 10 years ago. These candleholders are available to all.

Here is how the promotion works for member renewals. We will send you two Emerald Green stretch glass Melon Rib candleholders (a \$56.00 value) and renew your 2014 membership (\$18 or \$28 if renewed separately) for only \$44.95.

To order your candleholders AND renew your 2014 SGS membership, please make your \$44.95 check payable to "The Stretch Glass Society" and mail it and a membership renewal form to The Stretch Glass Society, [REDACTED]. We will ship your candleholders to you and record your 2014 membership as PAID. (A membership form is on the back of this newsletter and a separate email attachment.)

We encourage you to take advantage of this special offer now so that you don't miss out. This offer is only available through December 15, 2013, or as long as the supply of these beautiful candleholders lasts. We look forward to helping you find that unique gift for the special person on your shopping list.



On-line Questions and Answers about Stretch Glass

Q: Re: Large Stretch Glass Bowl

(From: Kate and Bill at www.cga mailing list)

To: Dave and Renée Shetlar and All: We were out gallivanting today, hunting for carnival glass and did not find anything exciting. However, we did come across this most delightful bowl in what we believe is American stretch glass. Since we are not very experienced with stretch glass, having only 3 stretch glass fan vases in our collection, we're hoping someone out there would be kind enough to advise us as to what we found. Words cannot describe the sheer beauty of the iridescence on this bowl. Frankly, even the pictures don't do it. Wow is the first thing that comes to mind.



Our questions are: a) Who is the manufacturer? b) Is there a pattern name or number? and c) What is this color called? As you can see, against black it appears to show magnificent shades of teal, green, violet and pink. Yet against white the base glass looks clear and the iridescence is pastel pink and yellow.

The measurements are as follows: 11 1/2" in diameter, 3 1/2" in height with a circular base 4 5/8" in diameter. The edge is ever so gently scalloped.

A: Your bowl was made by Jeannette! Jeannette made two shades of marigold - Gold and Amber. The Amber is usually a heavy marigold and we suspect that your bowl may be this color. We have not been able to determine any of the Jeannette stretch glass line numbers, so we have no name or number assigned to this bowl. We know of two bowls that have snap bases (3 & 4 5/8-inch diameter) and two that have three spade-feet. Jeannette was not known for superior iridescence, but about half of their snap-based bowls have ended up with amazing, multicolored iridescence or extremely, eye-popping gold iridescence! The rest is simply so-so! We have seen your bowl in a simple flared shape or with the rolled rim (like yours). Over the years, we have determined that Jeannette did make a few pieces of stretch glass using colored glass. We know of purple, a "dirty" green and even cobalt blue pieces!

Follow-up: Thanks so much for your response regarding this stunning bowl. Frankly, we were quite amazed to learn that this beauty was made by Jeannette. Most of the iridescence on Jeannette items that we have seen in our years of collecting has been rather unimpressive. Downright weak, in fact. Perhaps one fine day at Jeannette, a really inspired glass artisan went all out on a few of these pieces, just to show how it could be done. Who knows? Maybe Jeannette management frowned on these attempts as it was not cost effective or... whatever. All we can say is that the iridescence on this one is phenomenal, to say the least.

\$\$\$ It's Membership Renewal Time \$\$\$

If we have your email address, you'll find your 2014 SGS Membership Renewal Statement sent along with this newsletter as a 2nd attachment. **Please note: you WILL NOT receive a paper statement sent via U.S. mail unless you pay for a paper newsletter.**

Regardless of how you get the statement, you must fill it out and mail it, along with your check, to the Sunbury, Ohio address.

If you don't renew, you'll be wondering why you didn't get your February 2014 SGS Quarterly!

Recent Auction Review

by Anne Blackmore

When one of our Stretch Glass Society members chose to sell off part of her collection, she decided to work with a prominent auction house in Ohio.

Upon receiving the advertising flyer from the auction house, I was excited! The seller is known to have an exceptional collection and the thought of this person downsizing and selling off her treasures made me double-check the balance in my checking account.

When I visited the auction house website though, I was disappointed to see only a handful of rare and desirable pieces. The bulk of the auction was made up of readily-available items. Several manufacturers were represented, including Northwood, Fenton, Imperial, Dugan, Vineland, and U.S. Glass, and I decided to attend because the event was close to me.

It was sad to see the small number of people actually attending this Stretch Glass auction. Even with the event being held in conjunction with a Carnival Glass auction, there were approximately 15 people in the audience on the Stretch Glass side and many were there as pairs, so there were fewer actual bidders. There was also internet bidding, and the internet bidders took many deals that day and outbid those in the audience on many of the highly-desirable pieces.

Fenton Celeste Blue candlesticks with black feet brought \$450 from an internet bidder.



Looking down just one side of the tables of glass to be auctioned. An amazing rainbow!

As the sale began, the auctioneer stated no item would be sold for less than \$10, and if an item would not sell at that price point, it would be passed.

After analyzing all the auction data and bids, it is interesting to note a few things:

- ❖ The top 28 items brought just over half the auction's total.
- ❖ 239 items sold for less than \$20, and 78 items were passed.
- ❖ 17 of the top 20 selling items were made by the Fenton Art Glass Company.
- ❖ The top three selling colors in order were Celeste-like Blue (122 pieces), Topaz (75 items), and Florentine-like Green (72 pieces).
- ❖ The top three types of items, in order, were beverage sets (water/lemonade) with an average value per set of \$343, console sets with an average value per set of \$267.50, and punch bowls with an average value of \$226.



Fenton 9-piece Lemonade Set, even though it was missing the base for the pitcher, brought a dazzling \$950!

One of the most interesting things to note was the huge value difference between two Fenton Tangerine ringed, flared bowls. One bowl was flared slightly more than the other. The less-flared bowl brought \$45 and the more-flared bowl brought \$250. This is a hard-to-find piece, regardless of the amount of flare, but the enormous price difference between the two is stunning, and I cannot account for it.



In conclusion, this auction proved once again, common items will always be common items; and even in tough economic times, the best pieces will still bring strong prices.



MORE STRETCH GLASS FROM SGS'S CLOSET FOR YOU

Frank's Closet at the Fenton Art Glass Company is not the only place where goodies were stored away. Thanks to Millie Coty and Pam & Jim Steinbach for recently completing an inventory of our stretch glass "Closet," we now know what we put away over the years. We are making selected items from our stash of stretch glass available to SGS members at this time. As there are limited quantities of all of these items, they are offered on an "as available" basis. If you see something you like, please order promptly. When these are gone there are no more of these items.



Aquamarine Twin Dolphin Comport (order code: ATDC)

This colorful comport was the 2001 SGS Convention Souvenir made by the Fenton Art Glass Company using their ever-popular twin dolphin comport mold. The iridescence is nice and stretchy on these and they would make a great addition to your Fenton glass or dolphin display. There are less than 50 of these remaining in inventory. They are available at \$35 each.



Ruby Tri-Crimp Flared Vase Sample (order code: RTFVS)

These are the initial samples made in 2005 by the Fenton Art Glass Company to demonstrate what they could make for the Stretch Glass Society as a convention souvenir. Because they are samples, they do not have the SGS marking on the bottom. There are only 9 of these available, so if you want one, now is the time to get it. At \$35 each they are a bargain.



Violet Pedestal Plate/Pastry Stand (order code: VPPPS)

These were the last Convention souvenir made by the Fenton Art Glass Company for the Stretch Glass Society. The entire production was very limited (approximately 50 pieces plus whimsys). Only 9 of these remain in our inventory and they are available at \$45 each.



Topaz Opalescent Footed Bowl (order code: TOFB)

In 2003, the Stretch Glass Society requested the Fenton Art Glass Company make our convention souvenir in Topaz with an opalescent treatment. Very little vintage stretch glass exists with opalescence, making these attractive bowls a truly unique example of contemporary stretch glass. They are available at \$30 each.

Stretch Glass Society members may order 1 or more of any item and in any combination. Please add \$10 shipping per item; if actual shipping for multiple items to one address is less, we will refund the excess. Remember, when these are gone, there are no more. Don't miss out on the opportunity to purchase first quality, American-made iridescent stretch glass at special SGS member pricing. **Order now by making your check payable to "The Stretch Glass Society" and mailing it to The Stretch Glass Society, [REDACTED].**

THE STRETCH GLASS SOCIETY

MEMBERSHIP FORM

Please print first and last names and place an "X" in the boxes to the right for each line of information that you **DO NOT** want published in the annual SGS Member Directory.

NAME(S): _____ ☐

STREET ADDRESS: _____ ☐

P.O. BOX: _____ CITY/STATE/ZIP: _____ ☐

E-MAIL/WEB SITE ADDRESS: _____ ☐

TELEPHONE: _____

Cut on dotted line & mail with your check to Stretch Glass Society Treasurer,

THE STRETCH GLASS SOCIETY is an organization of knowledgeable and enthusiastic collectors of iridescent stretch glass, a glassware unique to America. Members share information on the manufacturers, colors and shapes and join in the camaraderie gained through associations with other stretch glass enthusiasts. Membership benefits include:

- A quarterly newsletter complete with identification tips, drawings, color photos, stretch glass selling and buying section and dates/locations of various up-coming glass events. The newsletter is provided by email with the e-membership and in printed format via the USPS with the standard membership.
- An annual Convention, Show and Sale complete with stretch glass whimsy auction and raffle drawing.
- An SGS website with member privileges, a list of stretch glass reference books, and a Member Directory.

ANNUAL DUES for THE STRETCH GLASS SOCIETY are as follows:

- \$18 e-membership for U.S. and Canadian residents (individual and/or family)
- \$28 standard membership for U.S. residents (individual and/or family)
- \$30 (US dollars) standard membership for Canadian residents (individual and/or family)
- All memberships run from January 1 through December 31.
- All first year NEW memberships are prorated based on the quarter the new member joins. Those joining in the first quarter pay the full yearly membership: those joining in the 2nd quarter pay 75%, the 3rd quarter 50%, etc.

(Members, please pass this on to friends and fellow collectors who are interested in joining THE STRETCH GLASS SOCIETY.)

FOUNDED APRIL 21, 1974 IN DENVER, PENNSYLVANIA

THE STRETCH GLASS SOCIETY

QUARTERLY

<http://stretchglassociety.org>



TO:



First Class Mail

NOTICE: The SGS Quarterly newsletter distribution schedule is: FEBRUARY, MAY, AUGUST and NOVEMBER.